



Planning Information: Blooming Stars Educare Outdoor Play Area Project

CREATING LEARNING ENVIRONMENTS CHILDREN LOVE TO PLAY IN





2018 aerial view of Blooming Stars showing outdoor play area to locate photographs on following pages.

Main Jungle Gym



The main jungle gym was reused from the existing shack facility. We use a supplier called Jungle Mania: <https://www.junglemania.co.za/>

The school has grown in size and the children would benefit from a larger, more varied structure supporting a broader range of gross motor skills and coordination.

Rubber Brick Flooring



The floor beneath the jungle gym is made from rubber bricks laid on a sand bed. Hard usage has resulted in bricks moving apart, creating areas in which paving is breaking up. To prevent this the paving needs to be laid on a bed of concrete and the bricks glued down.

The rubber bricks were supplied by Master Fibre (<http://www.masterfibre.co.za>) who produce a wide range of products including interlocking rubber tiles. The other supplier with whom we work is Macs Rubber (<http://www.macsrubber.co.za>), which like Master Fibre, does a wetpour rubber surface for playgrounds. They also have laid synthetic grass. We would probably approach them to support the team if professional assistance is required.

One of our challenges with rubber surfacing has been the need to prepare a cement base onto which the material is poured. The results are very durable and hard-wearing and offer an alternative to synthetic grass. If this were to become an option we would need to scope it with Macs Rubber.

AstroTurf



As seen on the front cover, children at Blooming Stars love their tricycle races! Hard usage and periodic flooding has resulted in the G5 gravel bed becoming potholed which leads of uneven wear of the AstroTurf.

The AstroTurf is now "bald" through hard use and requires replacement with new synthetic grass. The gravel bed needs to be refreshed, holes filled and recompactd before the new sythetic grass can be laid.

Heavt rain ponds on the play area, which has insufficient drainage to carry heavy rainwater away. Ideally this needs to be remedied when the gravel bed is renovated.

Blooming Stars has an unusually large outdoor space for play, and the astro surface lends itself to many different kinds of use. It would be very nice to be able to add some equipment to extend the range of activities children can participate in. If you follow this link it will take you to a catalogue full of ideas: <http://tufftoys.co.za/index.php/catalogue/>. Depending upon the team members you may like to look at making some (such as balance beams) yourselves or alternatively consider selecting and purchasing some items?

Small Jungle Gym & Sand Pit



A fence is required at the far end of the small jungle gym to prevent children from being out of sight from teachers.

The small jungle gym has a sand base – ideally this should be excavated, edged and the base should either be filled with bark chippings to provide a safe bed to land on with no sharp glass or metal shards to cause injury or could alternatively be surfaced with a rubber flooring?

Previous Garden Area



A tyre-garden was planted when the school opened in 2016.

There is no rainwater storage or grey-water recycling system to enable the watering of the garden.

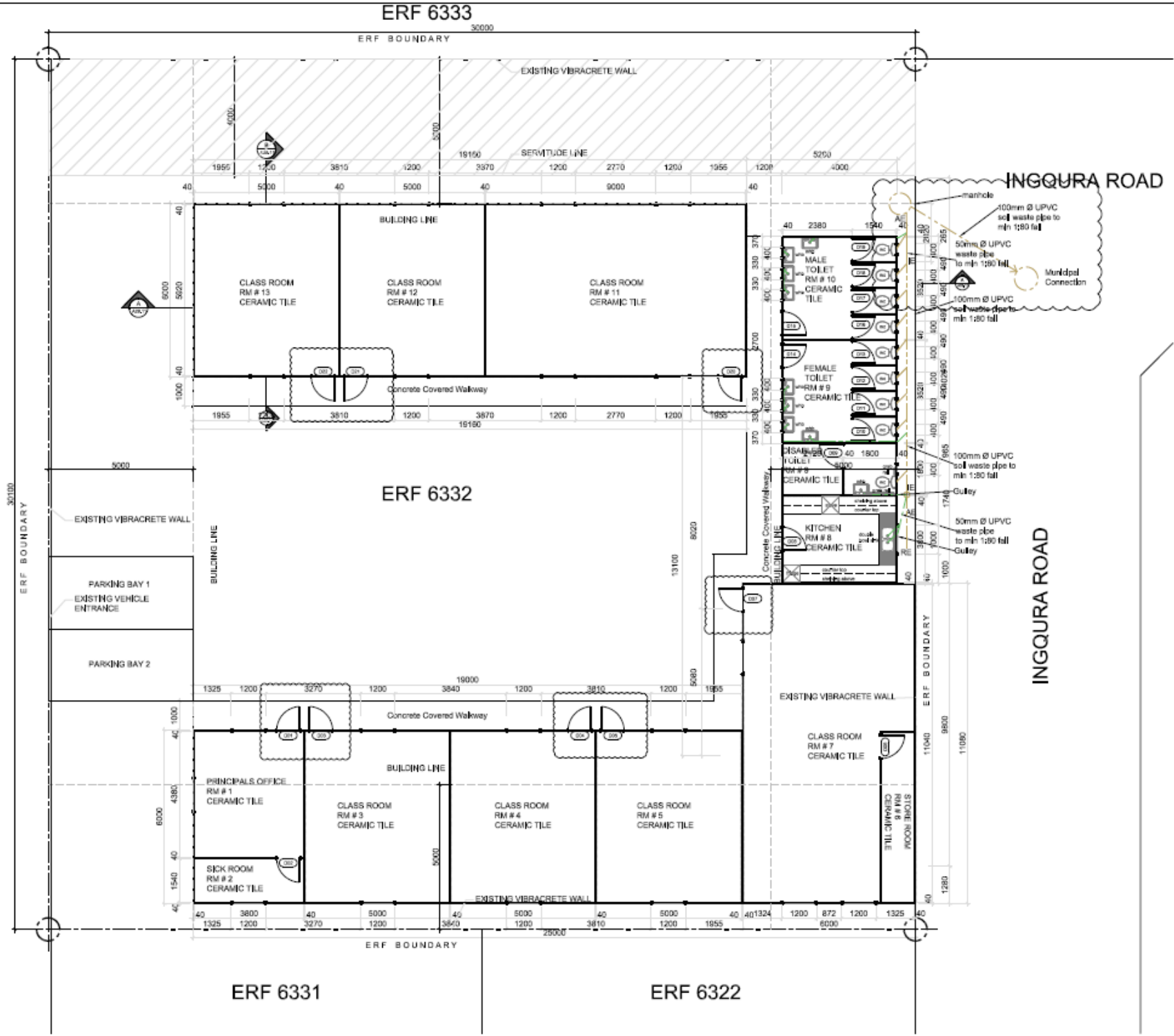
The principal has confirmed that she would like to have a veggie garden.



Dr Ian Corbett, Chairman

Starting Chance Trust Registration No IT002472/2015
NPO Reg No 164-217 • PBO No 930051444 • VAT Registration No 4450272614

TOKWANA ROAD



ERF 6331

ERF 6322

ERF 6333

ERF BOUNDARY

EXISTING VIBRACRETE WALL

SERVITUDE LINE

ERF 6332

INGQURA ROAD

INGQURA ROAD

ERF BOUNDARY